

The Historic Colors of South Carolina



of BEAUFORT ON
T ROYAL ISLAND.

PLAN of CAMDEN

APLAN
of
GEORGE TOWN

A MAP
of the
PROVINCE
of
SOUTH CAROLINA

with all the
Rivers, Creeks, Bays, Inlets, Islands,
INLAND NAVIGATION
Sights, Tracts of High Water on the Sea Coast, Roads, Bridges, Ferryes,
Bridges, Towns, Parishes, Churches, Towns, Townships,
COUNTY PARISH DISTRICT
and
PROVINCIAL LINES.
Publicly inscribed to the Hon^{ble} Lowlands Lovett Esq^r
by the rest of the Members of the Hon^{ble} the Commons House
of the Province, by their most Obed^t, faithful, & true
Sons, James Oglethorpe, John Oglethorpe, & John Oglethorpe

MEADORS

SINCE 1984

M E A D O R S

SINCE 1984



2811 Azalea Drive, Charleston, SC, 29405

Tel: 843 723 8585

www.meadorsinc.com

This booklet is available for download on our website.

© 2020

First Edition

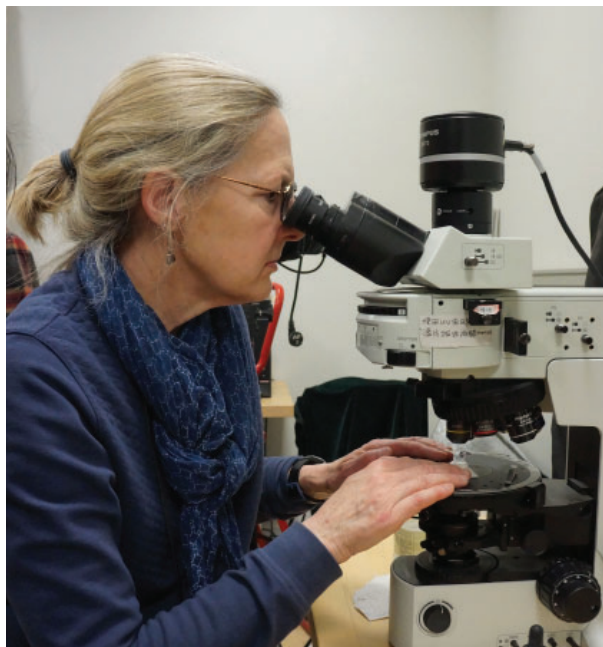
The map on the front cover is by James Cook, 1773 (David Rumsey Map Collection).

Table of Contents

Foreward	-2-
Introduction	-5-
Getting Started	-7-
Identifying a Local Project Coordinator(s)	-7-
Selecting Buildings	-9-
Gathering History (specific to coordinator)	-10-
Paint Analysis	-13-
Summary of Factors to Consider for Paint Analysis Budgeting	-17-
Planning for Sampling Day	-19-
What will I receive?	-19-
Funding Sources	-21-
Study Participation Form	-24-
Study Participation Agreement	-25-
Coordinator(s) Agreement	-26-
Budget Checklist	-27-
Rates and Fees Overview	-28-

Foreward

This architectural paint exploration to establish the historic exterior palettes of South Carolina communities is an exciting effort which has never been attempted, in any coherent way, in this country. Advances in paint analysis technology now make it possible to precisely analyze paint samples in cross-section and to establish the paint layer stratigraphies. This approach is much like identifying the natural layering of geological formations, but under the microscope. The Meadors team has invested in the equipment needed not only to conduct advanced paint analysis, but also to document and measure historic colors.



Dr Susan L Buck, PhD
Conservator and Paint Analyst

When the first comprehensive paint research in the United States began at Colonial Williamsburg in the 1930s, it involved careful scraping tests to reveal the earliest colors, and replications of these colors in watercolors to record them. This was a breakthrough at the time, but there have been many changes in paint technology since then. Architectural paint research at the beginning of the 21st century is far more scientific and replicable, and the training for analysts and conservators is rigorous and based on understanding the composition of organic and inorganic components of historic paints and varnishes.

Residents of many communities have a sense of the colors that were traditionally used to paint their historic buildings, and memories of the colors that they grew up with. But these palettes often date to the twentieth century, and are based on commercial paints, while the buildings may be considerably older. This proposed research into the datable palettes of historic buildings in South Carolina towns and cities will establish trustworthy and replicable color databases that can help inform decisions about historic palettes and will contribute to a fuller understanding of the colors that were common, or unusual, in the eighteenth and nineteenth centuries in individual towns and cities. It will also provide a way to compare the exterior treatments of the grandest and most modest historic buildings. I will be excited to watch the progress of the research and see the discoveries unfold.

Foreward



Mary Whyte
Artist, Teacher, Author

Color says a great deal about us. Whether it is our choice of clothing, decor, or the hue of our home's exterior, the colors we choose to surround us tell a great deal about our personalities, resources, influences and cultural history.

Charleston has long been a leading model for historical preservation. Though the appreciation and conservation of architectural color has been ongoing in the region for generations, some previously set parameters about period pigments and paint hues may have been skewed due to a lack of sound scientific research. Now, with the vision, expertise and dedication of the leaders at Meadors, an earnest project to discover and document our significant buildings' paint colors of the past has been set in motion. Through this extraordinary initiative, our country's rich and varied heritage of exterior architectural color will be accurately recorded and preserved.

Mary Whyte
AMERICAN WATERCOLOR ARTIST

Notes:



Broad Street Historic District, Charleston

MEADORS

CONSERVATION AND PRESERVATION PLANNING



Betty Prime
Head of Conservation and Preservation Planning at Meadors

Thank you for your interest in the Historic Colors of South Carolina Paint Study. We are excited about collaborating with you to record the decorative paint history of your community's historic structures and our state's most important buildings.

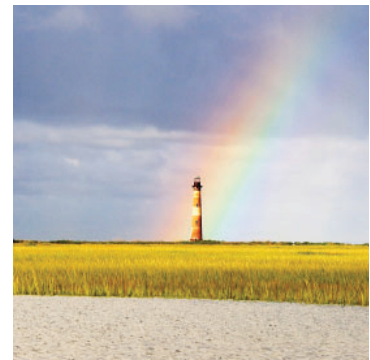
Each community is important and without your participation this research would be incomplete. This study will be the first of its' kind in the nation, and through your participation, we will be able to develop a one-of-a-kind historic paint database that can benefit your community and our state of South Carolina.



Getting Started

The Historic Colors of South Carolina Paint Study will focus on identifying original exterior paint colors from historically significant buildings in your community and across South Carolina. The research conducted in the Study will result in a publication of the same name, which features your community. In addition to the publication, all research will be made accessible to the public on the State Archives and History's Online Database - South Carolina Historic Properties Record. In order to get started, each community taking part in the study will need to identify a project coordinator, select buildings within their area to be analyzed, and work with owners to secure access and funding for the project.

The goal of this brochure is to provide a step-by-step guide for your community to use to understand how to plan and budget for historic paint research of your most prominent cultural resources.

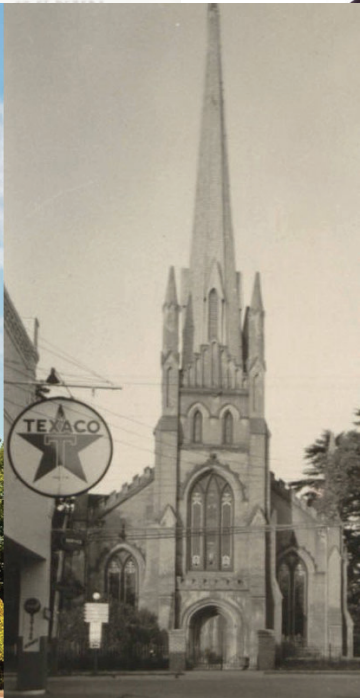


Identifying a Local Project Coordinator(s)

Each community which intends to participate in The Historic Colors of South Carolina Paint Study will need to identify a volunteer or group of volunteers to act as coordinators for the project. Their role is to be the liaison between the Meadors team of conservators conducting the analysis and the owners of the individual structures. The coordinator(s) will determine the extent of the research project in their area, conduct meetings with owners to determine those who are interested in participating, and perform the preliminary selection of structures taking part in the study.

The project coordinator(s) will be responsible for securing funds to pay for all analysis conducted by Meadors for each structure and the final single comprehensive document for the community. Prior to visiting the community for sampling, Meadors will require a deposit per structure participating in the study. (Rates and fees will be covered later in this booklet, and be kept up to date on the website.) Each owner will need to fill out the Study Participation Form and sign the Study Participation Agreement. Each coordinator(s) will need to sign the Coordinator Agreement for each structure participating in the study (see page 26).

- CHURCHES
- 1. ALMS HOUSE
 - 2. "COLLEGE W/ CHAPLAIN"
 - 3. CHAPEL ACADEMY
 - 4. CITY HALL
 - 5. COURT HOUSE
 - 6. CUSTOM HOUSE & POST OFFICE
 - 7. FIRE HOUSE
 - 8. HOUSE
 - 9. HOUSE
 - 10. HOUSE
30. 1ST PRESBYTERIAN
31. 4TH
32. CENTRAL
33. CLARE STREET
34. ST MICHAELS
35. ST PHILIPS
36. ST PAULS



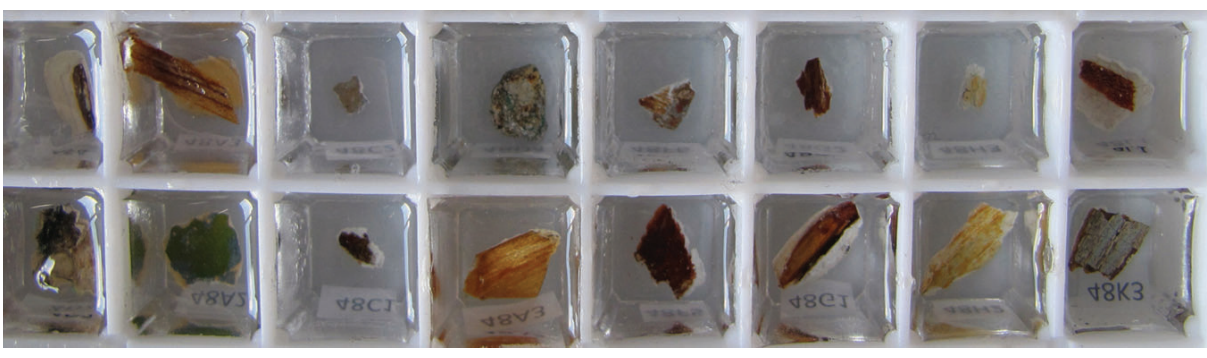
An Original Map
OF THE

Selecting Buildings

The community coordinator(s), are responsible for choosing which buildings will participate in the study. It is important when selecting the buildings in your community that the structures retain a significant portion of their original material. In order to achieve conclusive data on the original color palette of a building, it is imperative that original elements remain and that they have not been stripped of paint. It is possible to yield information related to the original color palette if the paint has been previously stripped, but these structures may not be the best selections as the analysis can be inconclusive.

As a general rule, we are looking for each community to select a group of structures that are representative of the historic buildings within their community. We think it is important that the study includes the following building typologies:

- Churches
- Commercial Buildings (retail)
- Public Buildings (courthouse, bank, etc.)
- Residential Homes



The larger the sample pool of buildings from each time period, the greater the potential to understand the color palettes and decorative trends employed in your part of the state, during a specific time period. Residential building selections from the following time periods are of interest: 1700's, 1800-1860, 1860-1899, and early 20th century. The time ranges encapsulate material and technological shifts and design trends that the State of South Carolina has experienced.

We understand that each community will have historic resources and building types that vary- that is why it is important to have local coordinators who know the area and cultural resources first hand and can guide the selection process. We are available to support coordinators and provide guidance as needed.

Owners should keep in mind that there will be small samples extracted from representative architectural elements that will not be repaired and repainted by the Meadors Conservation team. Each sample is approximately 1/4" x 1/4" to 1/2" x 1/2". Each element will have two samples extracted (one to analyze and one to examine for color matching), as well as an exposure. See adjacent page for photographs of a typical paint sample extraction.

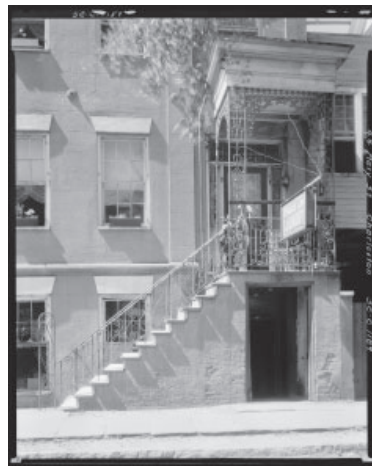
Gathering History

(specific to coordinator)

After the community coordinator has selected the buildings that will be in the study, but prior to beginning paint analysis, it is required that important historic information be gathered for each building. There are two methods of approach for historic research: the communities themselves can provide the information to the conservation team or the Meadors conservation team can be contracted with to conduct the research for some or all of the structures participating.

Important information needed for each structure includes:

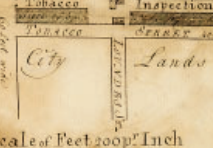
- Year of construction (actual or approximate)
- Original Owner, Subsequent Owners (if available)
- Original Builder/Architect (if available)
- Known building changes over time (repair, renovation, etc.)
- Type of Structure (example church, bank, residence etc.)
- Style of Building
- Plans, elevations, sketches, and illustrations (if available)
- Historic and recent exterior photographs
- National Register Forms



EXPLANATION

The parts or parcels of land marked A and coloured red are allotted to the Children of Hannah Wray and
 the parts marked B and coloured blue to the Children of Elizabeth Wray
 the parts marked C and coloured green are allotted to the Children of Mary Smith
 the parts marked D and coloured blue are allotted to Christopher Gadsden
 the parts marked E and coloured yellow are allotted to the Children of Elizabeth Hancock
 the parts marked F and coloured red are allotted to the Children of Elizabeth Hancock
 the parts marked G and coloured blue are allotted to the Children of Elizabeth Hancock
 the parts marked H and coloured red are allotted to the Children of Elizabeth Hancock
 the parts marked I and coloured blue are allotted to the Children of Elizabeth Hancock
 the parts marked J and coloured red are allotted to the Children of Elizabeth Hancock
 the parts marked K and coloured blue are allotted to the Children of Elizabeth Hancock
 the parts marked L and coloured red are allotted to the Children of Elizabeth Hancock
 the parts marked M and coloured blue are allotted to the Children of Elizabeth Hancock
 the parts marked N and coloured red are allotted to the Children of Elizabeth Hancock
 the parts marked O and coloured blue are allotted to the Children of Elizabeth Hancock
 the parts marked P and coloured red are allotted to the Children of Elizabeth Hancock
 the parts marked Q and coloured blue are allotted to the Children of Elizabeth Hancock
 the parts marked R and coloured red are allotted to the Children of Elizabeth Hancock
 the parts marked S and coloured blue are allotted to the Children of Elizabeth Hancock
 the parts marked T and coloured red are allotted to the Children of Elizabeth Hancock
 the parts marked U and coloured blue are allotted to the Children of Elizabeth Hancock
 the parts marked V and coloured red are allotted to the Children of Elizabeth Hancock
 the parts marked W and coloured blue are allotted to the Children of Elizabeth Hancock
 the parts marked X and coloured red are allotted to the Children of Elizabeth Hancock
 the parts marked Y and coloured blue are allotted to the Children of Elizabeth Hancock
 the parts marked Z and coloured red are allotted to the Children of Elizabeth Hancock

Village



Scale of Feet 2000' Inch

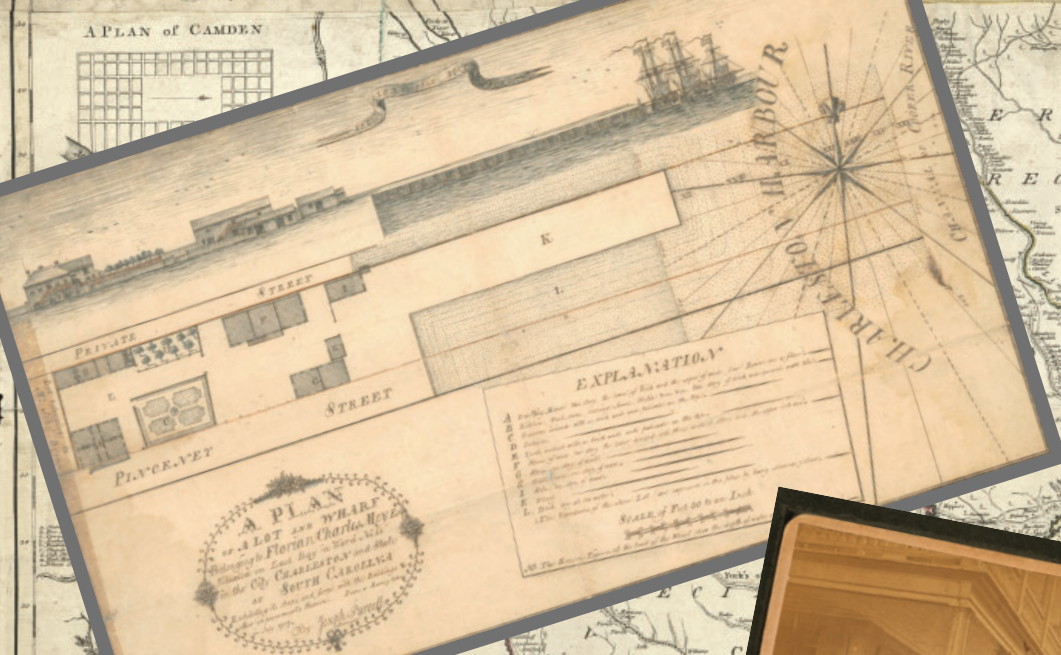
Hampstead



Scale of Feet 2000' Inch



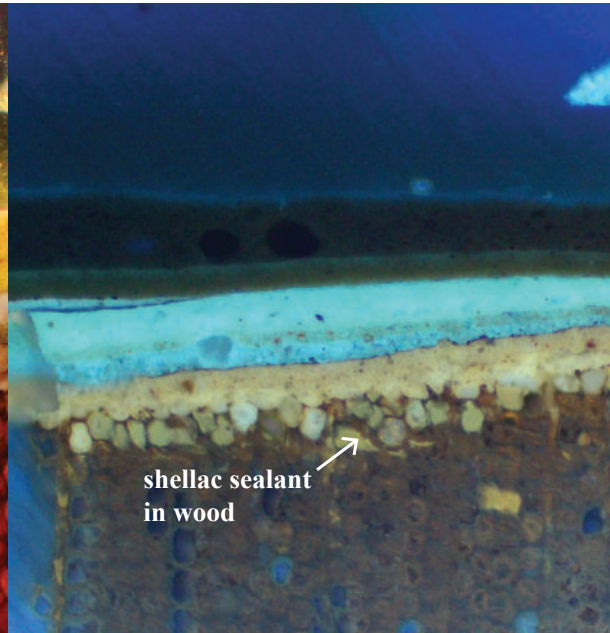
At the request and under the sanction
 of the Commissioners appointed by the Court of Chancery, to make
 a survey of a Body of land, called Wray's borough, containing in the
 whole 107 Acres 60 Roods and 35 A of high land and 35 A of
 marsh, situate in the County of Charleston, in the State
 of South Carolina, I have measured the same
 and have laid out and divided the same into
 lots, according to the plan of the said
 Commissioners. Witness my hand and seal
 this 12 day of June 1734.
 By Joseph Purcell



— Examples of paint samples seen through a microscope —



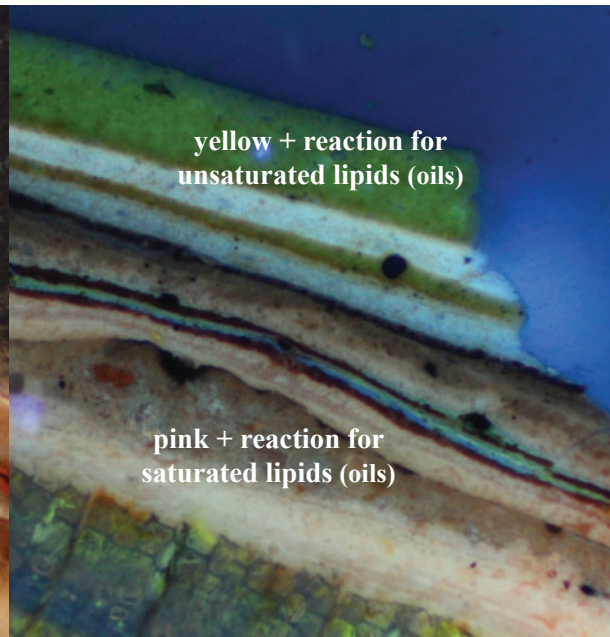
Visible Light- 100x magnification



Ultraviolet Light- 100x magnification



Visible Light- 100x magnification

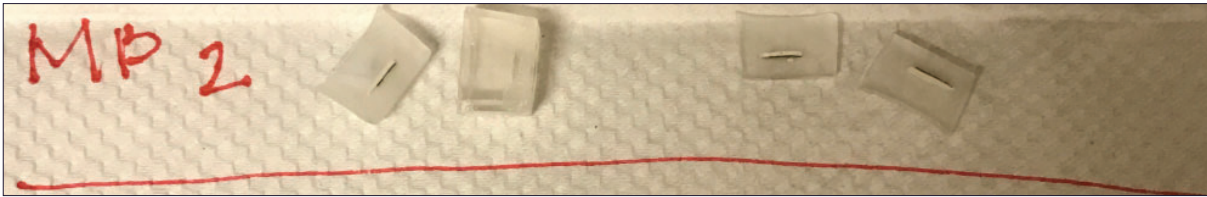


Ultraviolet Light DCF Stain- 100x magnification

Paint Analysis

For each building participating in the study, the coordinators will need to complete a *Study Participation Form & Agreement* (page 24 & 25). They will provide contact information for the owner, historic documentation checklists for the items outlined on page 10, as well as detailed instructions for our conservators in regards to who will be responsible for gathering the historic information for the properties. A *Budget Checklist* on page 27 provides a cost checklist to help generate a paint analysis budget for each building.

Below you will find detailed information related to budgeting for each structure participating in the study. There are several steps associated with paint analysis and our goal is to provide a checklist of services along with associated costs so that each community or individual can develop a budget for participation in the study.



How much will it cost to have a structure analyzed?

The cost to conduct paint analysis will vary by structure and will be dependent on several factors. Meadors charges per sample for paint analysis. The style of the building, the level of detail, and the extent of intact exterior architectural elements will influence the number of samples that need to be analyzed in order to fully understand the original exterior color palette of the structure. The Historic Colors of South Carolina Paint Study will focus on the original finishes used on the exterior of buildings. Interior samples will not be taken unless requested by the owner.

Paint samples will be extracted from representative elements of each structure; ~7 to 14 locations from each building. The actual number of samples taken will depend on the complexity of the structure, style of building, and extent of original materials still remaining.

Typical locations of interest include: wall, window (sash, sill, & casing), shutters (if applicable), doors (rail, style, & panel), columns, and trim. Each element of an item is considered a separate sample. For instance a sample from a window sash, sill, and casing would be considered a total of three samples.

Laboratory analysis consists of the processing, photographing, and an analysis of paint cross-sections. This includes a digital photomicrograph of each sample in reflected and ultraviolet light (see photomicrograph samples on page 12). A cross-section microscopy analysis sheet outlining the findings will be provided for each sample. The original finishes will be matched to the Munsell Color Chart and manufactured as a modern Historic paint line from our partner paint manufacturer, Sherwin-Williams.

The following section outlines the sampling and analysis process as well as the associated costs so that you can develop a budget for the paint analysis for the building/s in your community.

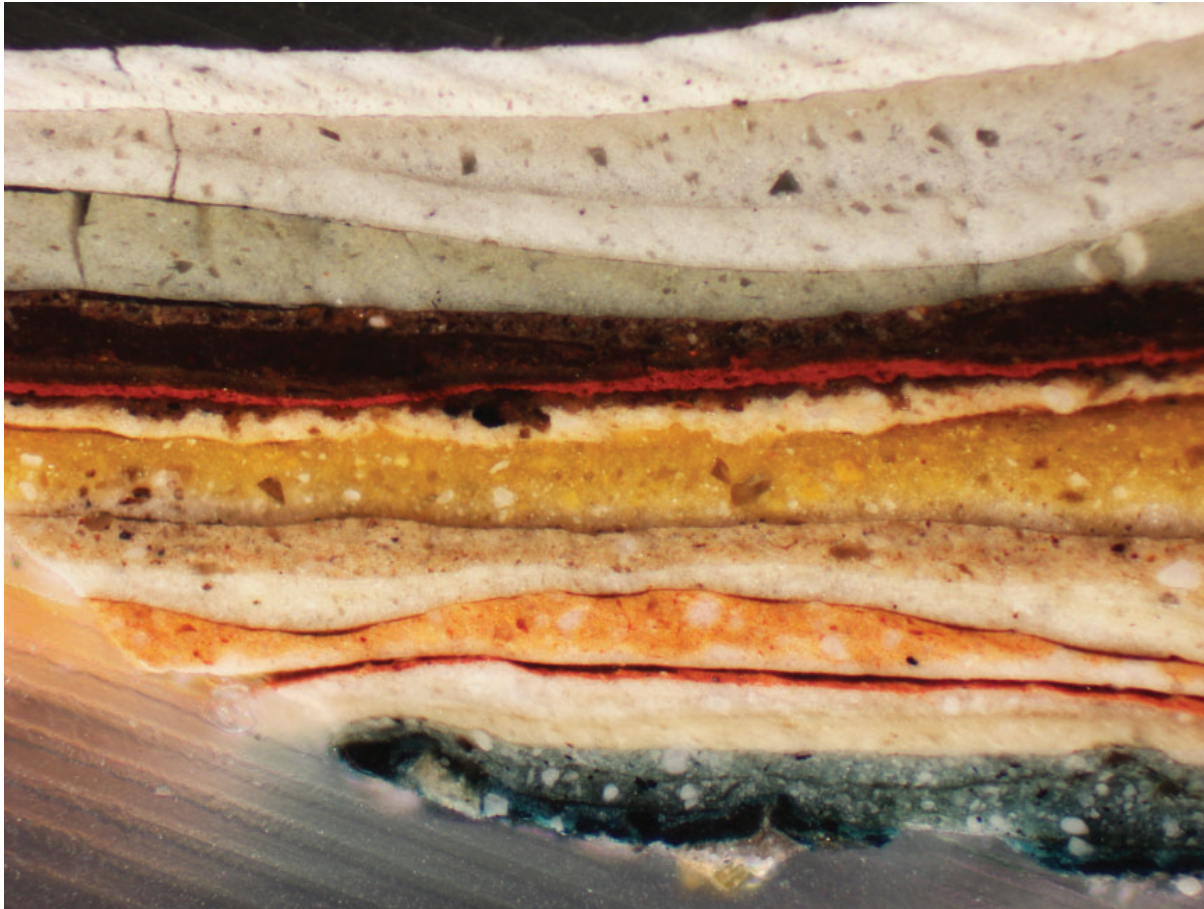
Sampling time will not be included in the laboratory analysis fee. Homeowners can choose to extract their own samples and mail them to:

Meadors Conservation Laboratory
2811 Azalea Drive
Charleston, SC 29405.

Meadors on-site sampling, travel costs and hourly rates are covered later in this booklet and also on the Meadors website - <http://www.meadorsinc.com/scpaintstudy>

The individuals that may be involved in the project and their positions are as follows:

Betty Prime	<i>AIA, Architectural Conservator</i>
Kalen McNabb	<i>Architectural Conservator</i>
Conservation Intern	<i>Architectural Conservator</i>
Fillmore Wilson	<i>Materials Specialist</i>
James Meadors	<i>Preservation Consultant/Owner</i>
Christine Bozigar	<i>Outreach</i>







Longstreet Theatre
Columbia, SC

Summary of Factors to Consider for Paint Analysis Budgeting

- TRAVEL & ACCOMODATIONS FOR CONSERVATOR TO SAMPLE

The community is responsible for providing mileage for conservators to travel to and from the sampling location. The Federal mileage rate will be used.

Meadors charges for travel to the sampling location. Potential savings to the community include bundling sampling for multiple buildings in a single trip to share the cost of the conservator to travel to the site. The travel costs will be divided evenly among the structures sampled during the trip.

The community is responsible for reimbursing Meadors for conservator accommodations if the sampling location is too far for staff members to travel to and from Charleston in one day. Receipts will be provided to the community. This expense can also be shared if multiple structures are sampled in one trip.

- SITE TIME FOR CONSERVATOR TO EXTRACT SAMPLES (~4 to 6 hours per building)

Actual sample time is dependent on the number of samples extracted, time associated with locating historic finishes, and removing intact paint samples.

- ACCESS

Meadors can provide ladders up to 18 ft. Lifts, if required, are not included in site visit fees. Lifts required for access to buildings to extract paint samples will be the responsibility of the owner.

- SAMPLE ANALYSIS & REPORT BUDGET PER BUILDING

~7-14 samples per structure

Total of \$ per building*

- FINAL SINGLE COMMUNITY REPORT DOCUMENT

Meadors will consolidate all of the individual structure reports into a single document that the community can use as a resource. Cost for this document depends on the total number of structures analyzed.

*Current rates and fees associated with the Historic Colors of South Carolina Paint

Study are on the Meadors website - <http://www.meadorsinc.com/scpaintstudy>



Private Residence



Trinity Church, Abbeville, SC



Private Residence



Broad Street, Charleston, SC

Planning for Sampling Day

The community coordinator(s) are responsible for securing access to each building and organizing general time frames and schedules with the Meadors Conservation team.

Access - Some buildings can be sampled from the ground, while others may require ladders or a lift. Community Coordinators will need to work with Meadors to evaluate what type of access will be required for each building in their community.

Sampling - Sample extraction locations will not be repaired or repainted by the conservation staff. Community coordinators will be responsible for reviewing this with each owner participating in the study and having them sign the *Study Participation Agreement* (see page 25).

What will I receive?

The owner will receive a detailed report outlining the findings of the paint analysis for your building. Please see the website for an example of a Paint Analysis Report (<http://www.meadorsinc.com/scpaintstudy>).

Following the analysis of individual buildings within your community, the structures will be evaluated as a group and the information gathered from individual structures will be synthesized to bring all the information together into a single comprehensive document titled Historic Colors of (name of specific community). This information can be used by your community to develop historic paint guidelines.

The culmination of the research and paint analysis completed in each community will be published in a book titled The Historic Colors of South Carolina. The book will discuss the findings in each community, as well as decorative color palettes and trends seen over time. The book will serve as a resource for preservation and planning in the communities studied as well as provide a baseline for historic exterior color palettes and become a key resource for future preservation projects across the state and region. The book will be available online or for purchase as a hard copy.



Garvin House
Freedmans Cottage
Bluffton, SC

Funding Sources

Each community will be responsible for securing funding for participation in the Historic Colors of South Carolina Paint Study. There are many ways to go about funding the project. Some potential avenues include:

1. INDIVIDUAL HOMEOWNERS

Individual Homeowners that would like to participate can pay directly for the analysis of their homes historic finishes.

2. GRANTS

Communities can apply for grants through the South Carolina Department of Archives and History's Federal Historic Preservation Grants. Any local government, non-profit, or institution in South Carolina may apply for the grant. Grant awards range from \$2,500 to \$25,000*. The maximum amount awarded is \$30,000*. Part of the grant requirements includes a 50/50 reimbursable matching grant, each grant applicant must demonstrate a dollar-for-dollar match and pay for the project costs up front. Additional information about the Federal Historic Preservation Grant can be found on the SHPO website.

<http://www.shpo.sc.gov/programs>

*Grant amounts change periodically - Funding ranges are accurate at the time of printing.

OTHER POTENTIAL GRANT SOURCES INCLUDE:

Drs. Bruce and Lee Foundation

The foundation aims to advance the general welfare of people in the Florence, SC, area, and the surrounding region by providing economic support to qualified and nonprofit organizations. In furtherance of its mission, the foundation will support a broad range of charitable purposes including, but not limited to medical, health, human services, education, arts, religion, civic affairs and the conservation, preservation and promotion of cultural, historical and environmental resources programs. Organizations interested in applying for future grants can contact the foundation office at 843-664-2870.

Applications are awarded semi-annually in the spring and fall.

3. COMMUNITY SCHOLARSHIPS

Members of the community in which the study is taking place may choose to provide a scholarship for an individual building to be analyzed. There may be structures within your community that you feel are very significant but the individual homeowners or community organizations do not have the funds to participate. Reach out to members of the community that you feel support the survey and preservation of your local historic resources as potential sources of scholarship funding.

Funding Sources continued

KEEPER'S PRESERVATION EDUCATION FUND

The Keeper's Fund was established to provide assistance to "aspiring or established preservation professionals in the United States to increase or share their professional knowledge or enhance their career potential in historic preservation-related subjects." This grant could be used for education (workshops and conferences) or an individual research project (The Historic Colors of South Carolina Paint Study Project). A sponsoring organization is needed, and preference is given to those who haven't received the grant within the last 24 months. There is a rolling application process, but application should be made at least three months before the grants are needed.

THE KINSMAN FOUNDATION

The Kinsman Foundation is a non-profit organization that offers grants for historic preservation projects. Most projects involve National Register buildings or districts, but it is not a requirement. Grantees are usually non-profits, but it is not required. Grant application is available year-round.

4. ONLINE FUNDRAISING

Online fundraising websites allow individuals and non-profit organizations to utilize their services to reach a larger audience of potential donors and raise money. Examples of online fundraising sites include:

GoFundMe, FirstGiving, and YouCaring.



Photomicrograph of cast iron porch railing.

The Historic Colors of South Carolina

Study Participation Form

(Available online at www.meadorsinc.com)

Thank you for your interest in The Historic Colors of South Carolina Paint Study. We are excited about collaborating with you to record the decorative paint history of your community's historic structures and our state's most important buildings. Each community is important and without your participation this research would be incomplete. Through your sponsorship, we will be able to develop a one-of-a-kind historic paint database that can benefit your community as well as the entire State of South Carolina.

Contact Information for Participating Property Owner:

Name : _____

Address : _____

Phone Number (home) : _____

(cell) : _____

General Information about Building:

Address : _____

Historic Names of Property : _____

Approximate Construction Date : _____

Type of Structure (example church, bank, residence etc.) : _____

Original Owner, Subsequent Owners (if available) : _____

Has the structure been renovated or restored in the past (include approximate dates if possible) :

If available, please provide copies of the following: plans, elevations, sketches, illustrations, historic and recent photographs, and National Register Forms.

Feel free to provide additional historic information not specifically requested on this form. If you need assistance with historic research on your building please contact Meadors for a proposal.

The Historic Colors of South Carolina

Study Participation Agreement

(Available online at www.meadorsinc.com)

I agree to participate in The Historic Colors of South Carolina Paint Study. Small representative paint samples will be extracted from exterior elements of my historic structure and I acknowledge that extraction sites will not be repaired or repainted as part of The Historic Colors of South Carolina Study. A non-refundable deposit of \$500.00 is due with Study Participation Form and Agreement.

Address of Structure to be Sampled : _____

Name of Participant (print) : _____

Signature : _____

Date : _____

\$500.00 Non-Refundable Deposit Enclosed

The Historic Colors of South Carolina

Coordinator(s) Agreement

(Available online at www.meadorsinc.com)

I agree to act as the coordinator for The Historic Colors of South Carolina Paint Study in my community. I will act as the liaison between the Meadors team of conservators conducting the analysis and the owners of the individual structures taking part in the study. I am responsible for determining the scale of research in my community, conducting meetings with interested property owners, and performing preliminary selection of structures. I acknowledge that the community and participating property owners are responsible for securing funds to pay for all analysis conducted by Meadors. I will ensure that each participating property owner submits a “Study Participation Form” and signs the “Study Participation Agreement”.

Name of Community: _____

Name of Coordinator(s) (print) :

Signature (s)

Date: _____

Please include a Preliminary List of Participating Properties :

The Historic Colors of South Carolina

Budget Checklist

(Available online at www.meadorsinc.com with current rates)

BUDGETING FOR SAMPLING

Travel Time for Conservator (Charleston, SC to Building):

\$_____ per hour x _____ hour(s) = \$_____

Mileage for Conservators to Travel from Charleston, SC to the Building:

\$____.____ cents per mile x _____ miles = \$_____

Accommodations for Conservator (if required due to distance of site from Charleston, SC):

= \$_____

Lift for access (if required due to inability to reach sample area via ladder, max height accessible with ladder is 18 ft.):

= \$_____

Note: Items above can be shared with the owners of other buildings being sampled in the community during the same sample trip. Community Coordinators can assist you with identifying other buildings that can be sampled at the same time as yours to reduce costs.

Sampling Time: Approximately 4-6 hours:

\$_____ per hour x _____ hour(s) = \$_____

BUDGETING FOR PAINT ANALYSIS

Estimated Number of Samples (Approx. 7-14 samples, depending on the complexity of the Building):

\$_____ per sample x _____ # of sample(s) = \$_____

Note: Paint Analysis Report included in the per sample rate above.

PRELIMINARY BUDGET = \$_____

The Historic Colors of South Carolina

Rates and Fees Overview

Below is a list of rates and fees associated with the Historic Colors of South Carolina Paint Study. The current rates can be found on the website at :

<http://www.meadorsinc.com/scpaintstudy>

Several factors will determine which fees will apply to specific projects, depending on how many samples will be analyzed, whether Meadors collects samples, travel etc.

Fee line items are:

- Non- Refundable Deposit to start the process
- Sample collection - per sample
- Sample analysis
- Single Community Report Document - per complete community assessment
- Travel
- Accommodation

Buildings themselves are a time capsule of information and are the primary resource for understanding the chromatic history of our state.

Architecture evolves over time. The change is influenced by the culture, decorative trends and inspiration of the craftspeople of the day and the current inhabitants who replace and alter elements of their buildings. Historic structures in South Carolina vary in scale, but each uses color as a means of expression.

Through the analysis of painted surfaces on buildings from various time periods and locations in South Carolina, we can determine which materials were preferred and readily available during specific years. The color palette research for *The Historic Colors of South Carolina* will add significantly to our understanding of the aesthetic, cultural, and economic influences of the people who settled and built South Carolina.

Endorsed by:

Dr. Susan Buck, Ph.D - Conservator and Paint Analyst
Mary Whyte - Artist, Teacher, Author
South Carolina State Archives and History
Palmetto Trust for Historic Preservation

MEADORS
SINCE 1984

P.O.Box 21758, Charleston, SC, 29413

www.meadorsinc.com

843 723 8585

Contact: betty@meadorsinc.com